

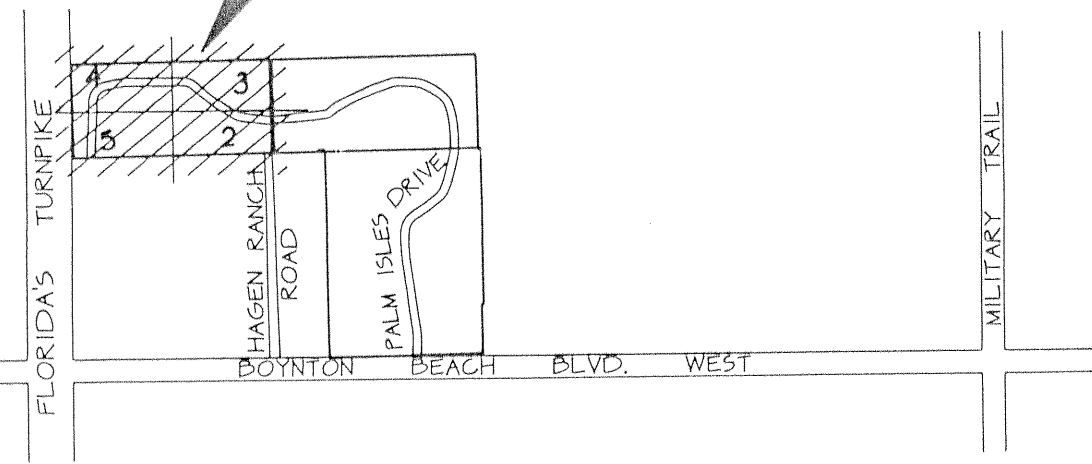
PALM ISLES III, A P.U.D.

A REPLAT OF A PORTION OF TRACT U OF PALM ISLES, A P.U.D.
AS RECORDED IN PLAT BOOK 67, PAGES 116 THROUGH 127 INCLUSIVE OF THE PUBLIC RECORDS OF PALM BEACH COUNTY, FLORIDA
ALL IN SECTION 21, TOWNSHIP 45 SOUTH, RANGE 42 EAST, PALM BEACH COUNTY, FLORIDA

THIS INSTRUMENT PREPARED BY JAMES E. PARK, P.L.S.
WILLIAMS, HATFIELD & STONER, INC. - ENGINEERS PLANNERS SURVEYORS
1325 SOUTH CONGRESS AVENUE, SUITE 118, BOYNTON BEACH, FLORIDA 33426

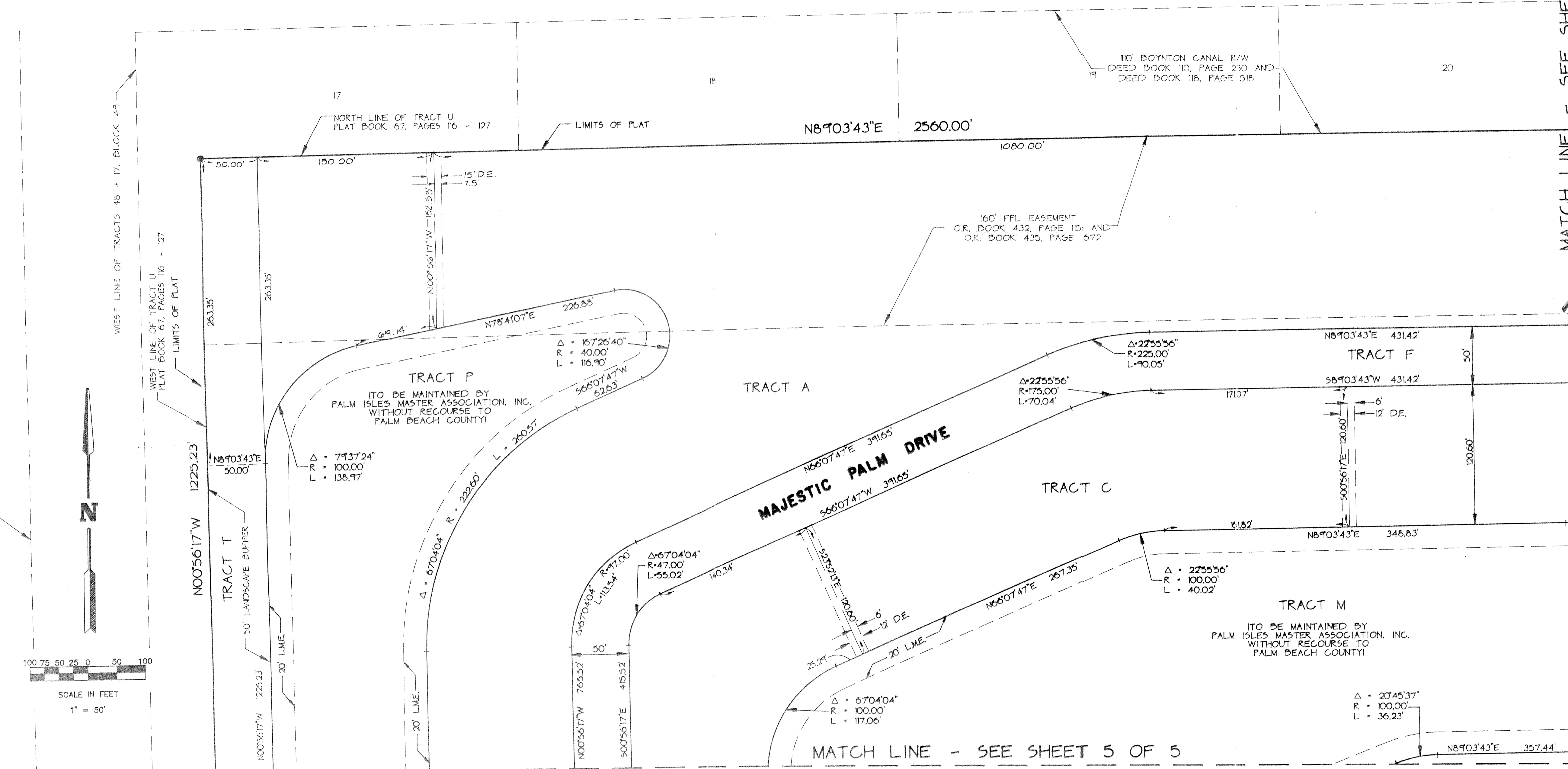
SHEET 4 OF 5

THIS PROJECT



LOCATION MAP

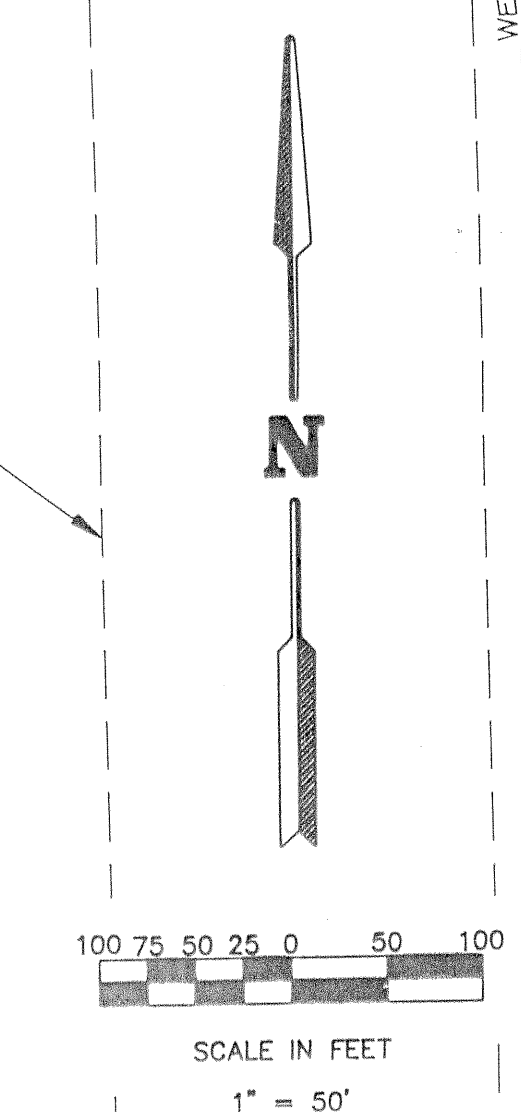
PALM BEACH FARMS COMPANY
PLAT NO. 3, PLAT BOOK 2, PAGES 45 - 54



MATCH LINE - SEE SHEET 3 OF 5

PET. 87-921
ALLOC. #0001
NO SCHOOLS.
OVERRIDE

PHASE 3
TR. L.M.N



0571-006

PALM ISLES III 7/1/92